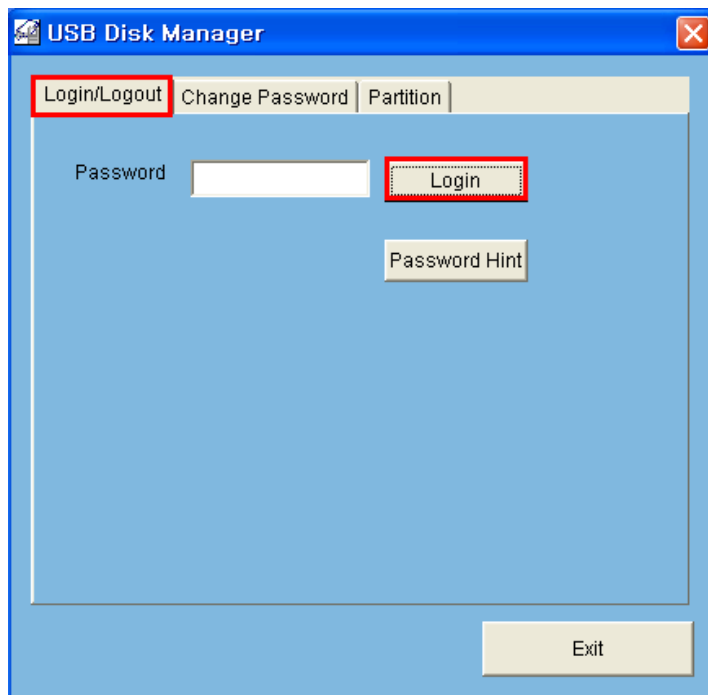


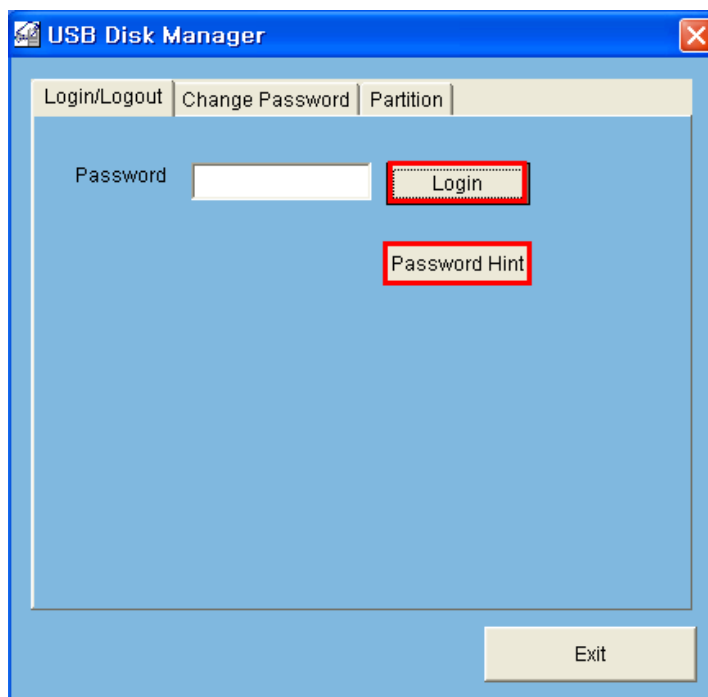
1. "Log-In / Out" Tap



a. It is for "Log-in/out" into/from Security Disk area, once it is implemented.

b. User can put the "Default P/W" which he set in Default Password: , in Partition Tap, when he partitions the UFD as Public & Security Disk Area.

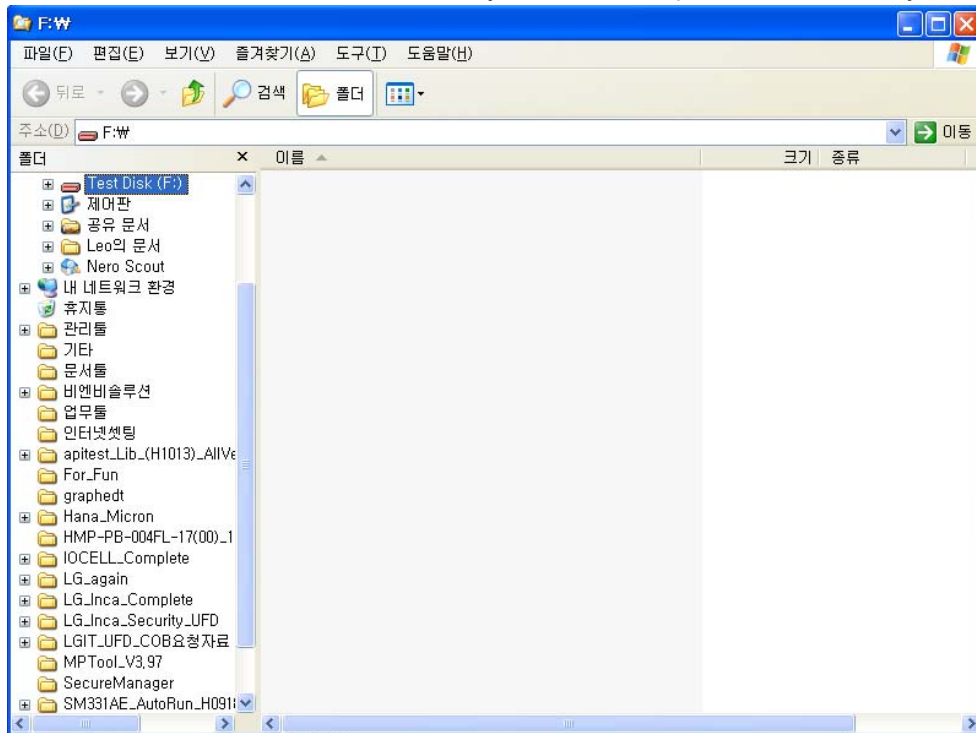
c. Once UFD is partitioned as Public & Security, then, Log-in button will be activated as below.



d. Once Log-in is successful, user comes to get below message.



After click  button, Security Disk will be opened automatically, as below.



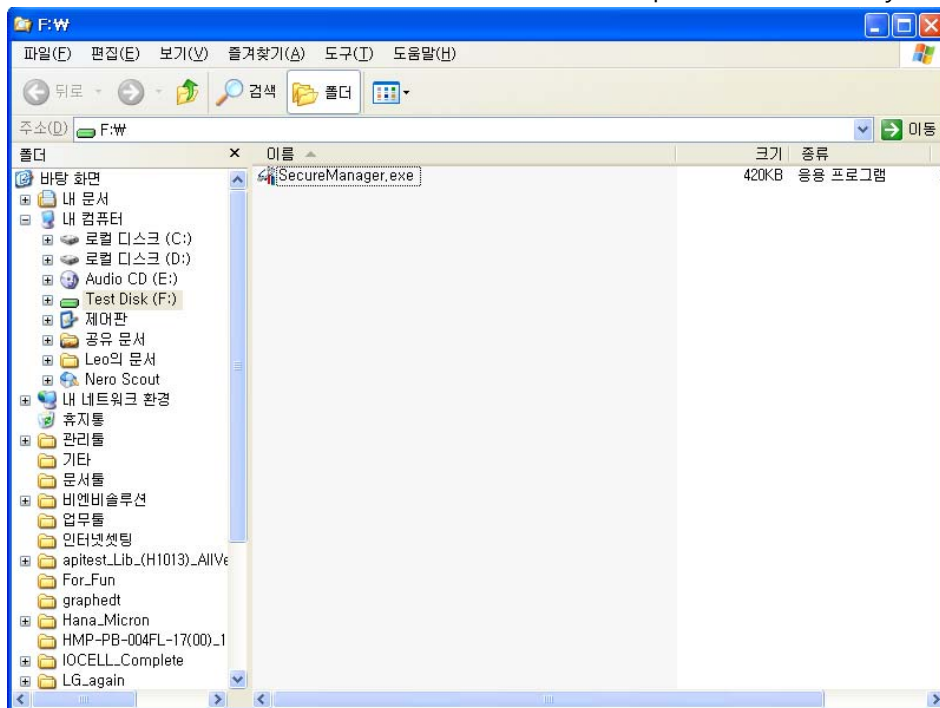
If Log-in fails due to wrong Password, then, below message will happen.



e. After Log-out, user will get below message.

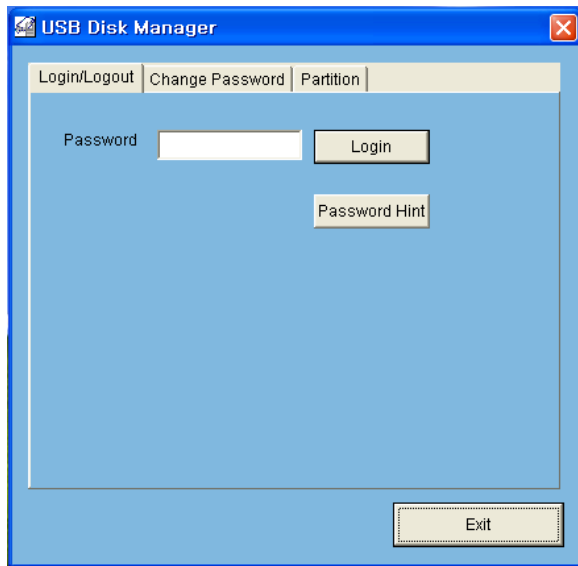


After click  button, Public Disk will be opened automatically, as below.

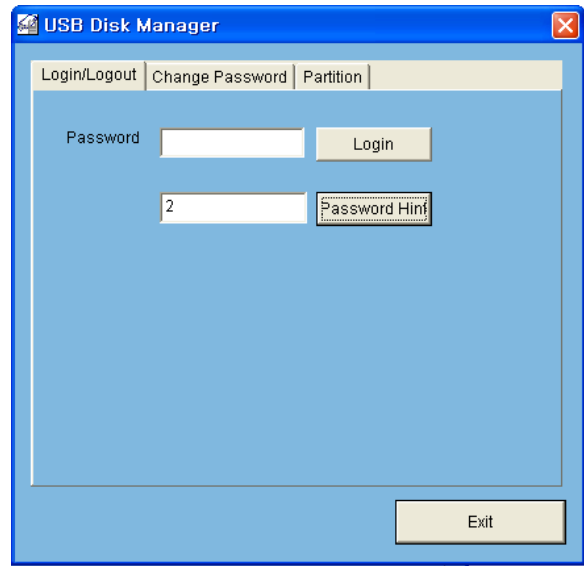


- f. Password Hint is to get the "Password" which User set when partition.

It is hided at default to prevent any revealing of P/W and activated if button is pushed, as below.

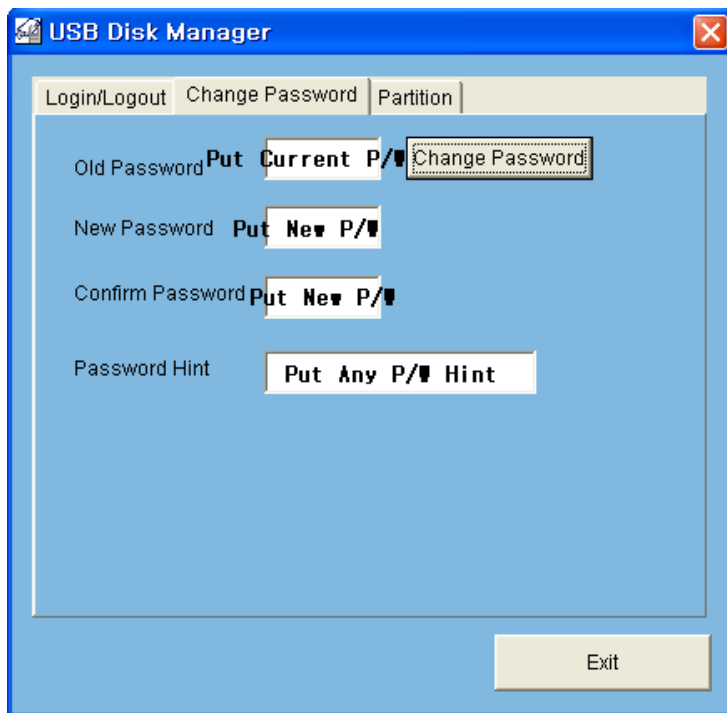


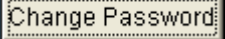
a. Hided, at default



b. Shown when pushed.

2. "Change Password" Tap.



a. After putting all the required PW and PW Hint(if required), push the . Then, user will get below message.

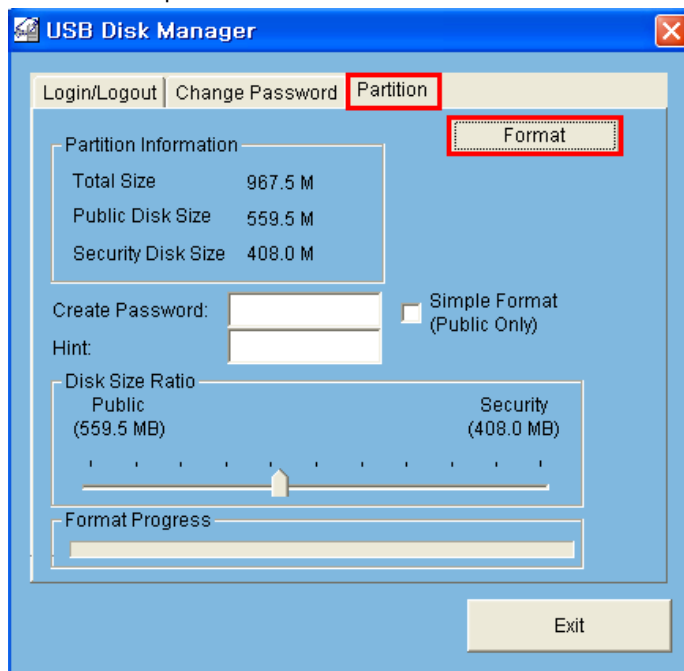


- b. From this, only "New P/W" can be effective.

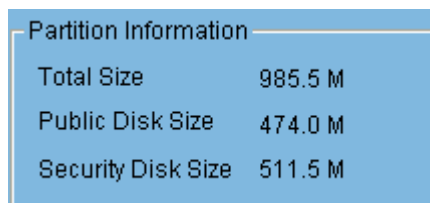
Note : If user forgot the P/W, then, there is no way but to Partition, again!

In this case, all the private data both in Public & Security Disk will be disappeared!

3. "Partition" Tap.



- a. Below box instantly shows the exact Disk size of Total, Public and Security when user moves the scroll bar.



- b. Below boxes are for setting "P/W" & its Hint those are required for logging-into the

newly made Security Disk. It is only activated when  is released.

Create Password:

Hint :


- c. Below menu can make Partitioned Disk into whole Public Disk(ie, Total UFD capacity will be equal to Public Disk and no Security Disk!)

☐ Simple Format
(Public Only)


- d. User can change the portion between Public & Security Disk size with below scroll bar.

Disk Size Ratio

Public	Security
(474.0 MB)	(511.5 MB)



And the change will be shown above "Partition Information" box, instantly.

- e. After setting the "Portion" and "Default P/W", push the  button, then, user will get below "Warning Message"

Warning

 Warning : partition will erase all data on the disk

- f. Then, below progress bar will change.


Format Progress



- g. After finished, then, user will get below message.

USB Flash Disk Ma...

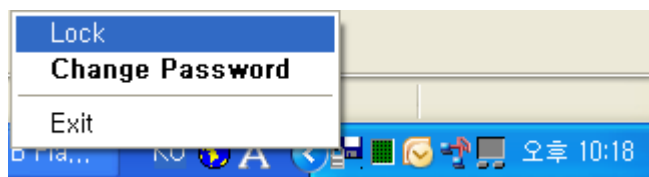
Secure Partition created,
Please safely unplug and
reinsert. New password is
3

- h. For all the "Log-in/out", "Change Password", and "Partition" Taps, if pushes the  button, Utility will reside in System Tray, as below.



4. Tray menu.

- a. Lock.



It activates "Log-in/out" Tap.

- b. Change Password.

It activates "Change Password" Tap.

- c. Exit.

It terminates this Utility forcibly.

Note :

1. Utility will reside in System Tray until UFD is plugged-out or forcibly terminated with below "Exit" menu.



2. This Utility is permitted & works correctly only with Imation's permitted UFD products.
3. For Device's Integrity, This Utility is permitted only for ONE LOGICAL UNIT NUMBER(ie, without CD-ROM) and WHOLE PUBLIC DISK UFD(ie, without Security Disk) Device, when initially released,